

RMX ACCESSORIES

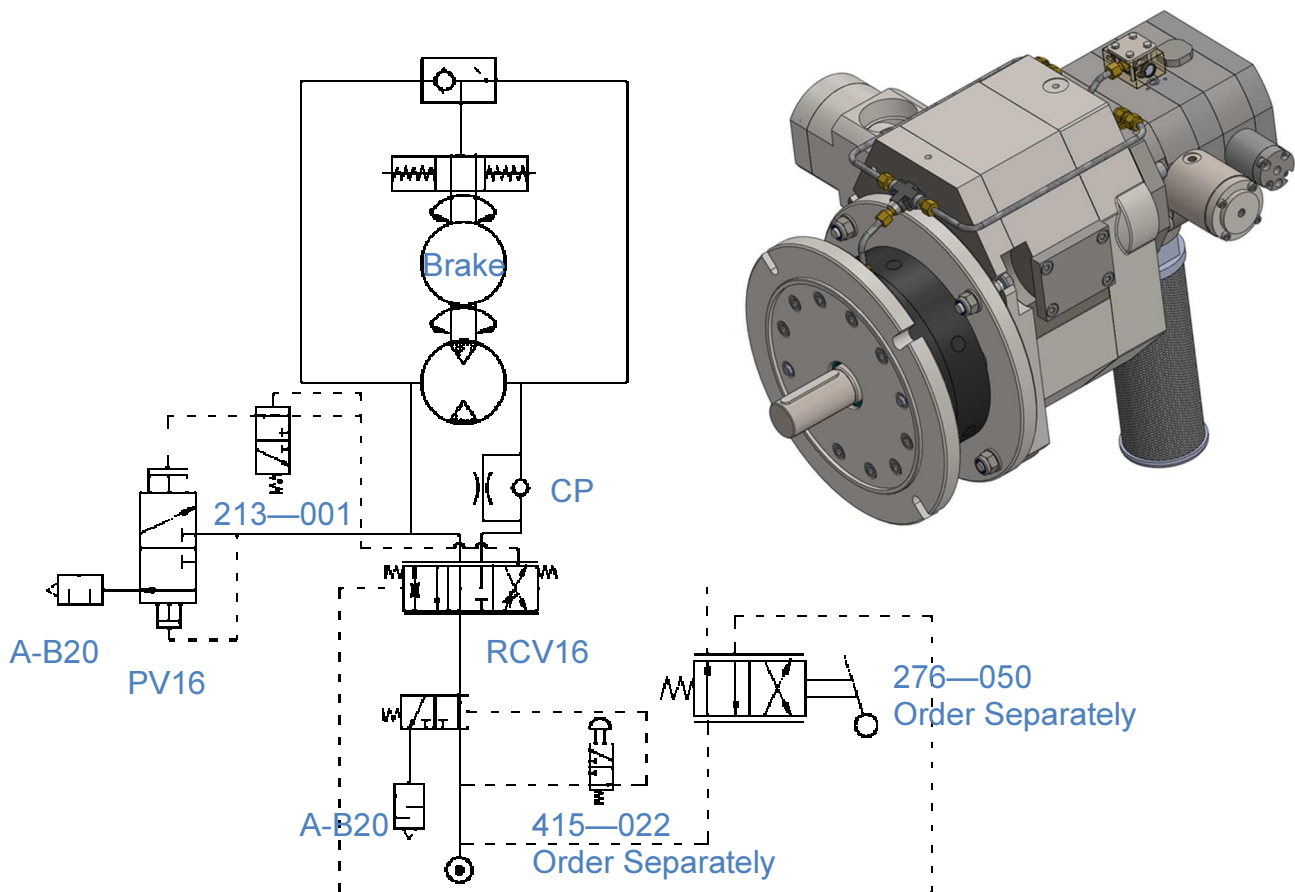
Power Valve for operations on GP16

To ensure that the proportional valve gives excellent control under minimal flow requirements, the valves are sized for such performance. This however, can lead to a restriction in the exhaust minimising the efficiency and motor power output. The power valve is designed to minimise back/exhaust pressure on the geared piston motor. The valve is designed to ensure high power is available when it is required. At 60% of the proportional valves stroke, the pilot valve **213-001** will signal the power valve to open additional exhaust ports. Exhausts can be fitted in either or both additional exhaust ports dependant on the maximum power requirements. The power valve also offers an internal adjustable stop that can be set to prevent over speeding for when the motor is operating off load.

The power valve is positioned on the exhaust side for the power direction required. This must be specified when ordering the motor. A dual power valve to give maximum power in both directions is also available but its performance in the opposite direction will be as per the AGP10 performance. See data sheet.

An example of a typical AGP16 complete assembly

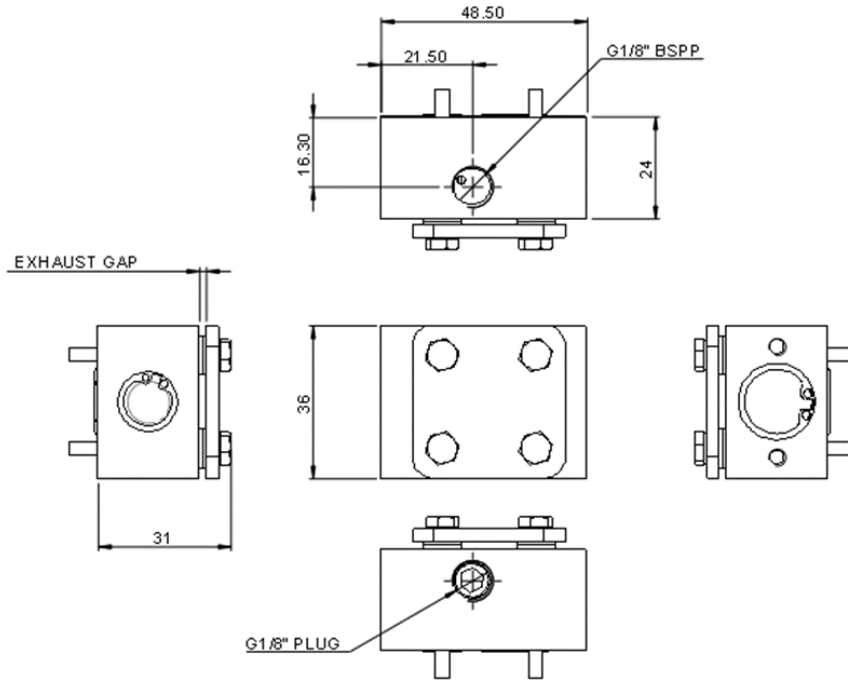
AGP16FRCPSK



RMX ACCESSORIES

Power Valve for operations on GP16

213-001



Pilot valve fitted to LCV and RCV 16 proportional valves for power valve actuation

PV16

